



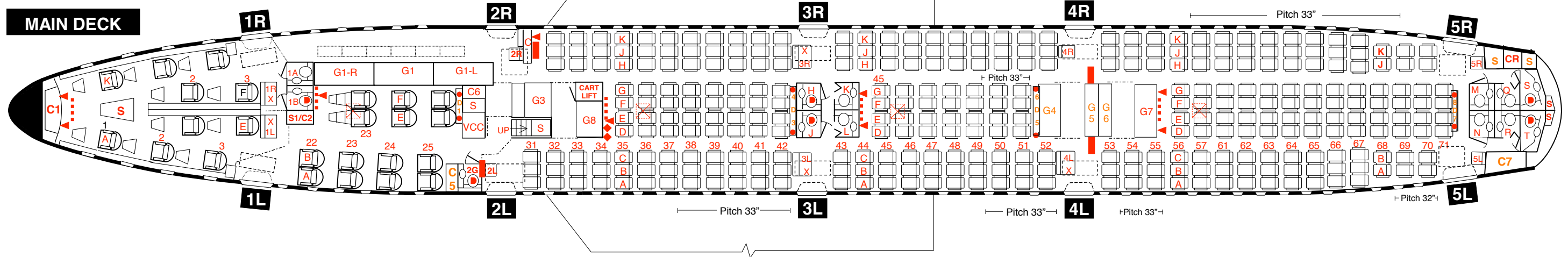
ZONE A
First class - 10 seats

ZONE B
Business class - 14 seats
Pitch 60"

ZONE C
Economy class - 101 seats
Pitch 34" except as noted

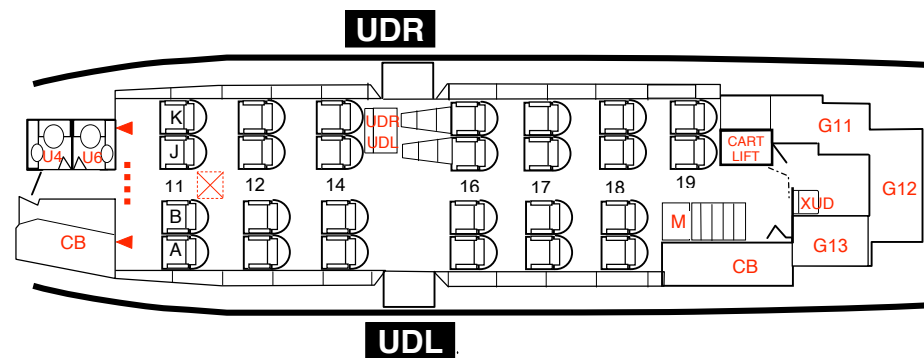
ZONE D
Economy class - 88 seats
Pitch 34" except as noted

ZONE E
Economy class - 136 seats
Pitch 34" except as noted



UPPER DECK

ZONE U
Business class - 26 seats
Pitch 60" except as noted



Facilities for passenger with disability

Onboard wheelchair accessible lavatories
Not available

Movable armrests
Not available

Onboard wheelchair
One onboard wheelchair is provided

Stowage for individual foldable wheelchair
Not available

(744) INTERIOR ARRANGEMENT 747-400 VERSION 7443: HS-TGH J K L M N O P R T W X

- ◀ Baby bassinet position
- Bustle position
- C Coatroom
- ◆ Cordless telephone
- CB Crew bunk (double bunk)
- Diaper-change board in Lavatory
- D Doghouse
- G Galley
- M Magazine rack
- S Stowage compartment
- VCC Video control center
- ▮ Video monitor, LCD 15"
- ⊗ Video projector
- Video screen
- CR Stairwell to aft crew rest compartment

Lavatories	15
CA seats	18
First class seats	10
Business class seats	40
Economy class seats	325
TOTAL SEATS	375

NOTE:

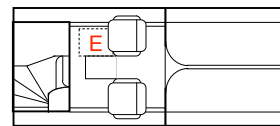
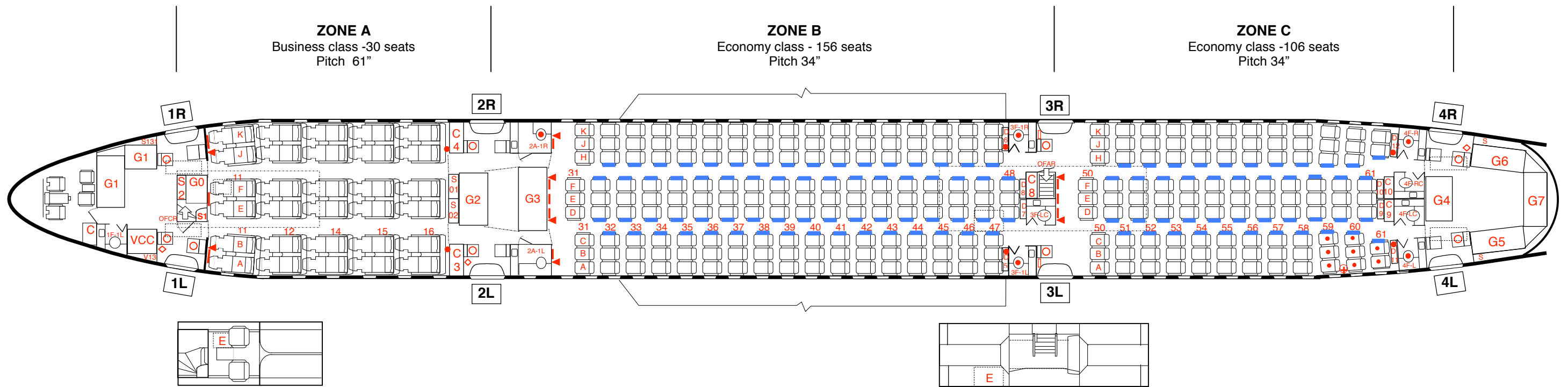
Each seat in First and Business class is equipped with inseat telephone, inseat video and PC power outlet (115 VAC)

REASONS FOR REVISION:
Added description of facilities for disability passengers

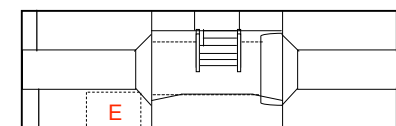
Prepared by: BKKOT
Issue No. 11
Effective: 29MAY09

This document contains information intended only for the purposes related to training, crew procedures and passenger relations. Any discrepancy, contact BKKOT Tel. 02-5452816, Fax. 02-5453851, email: pawinee.w@thaiairways.com

This info is available in Thaisphere/THAI Family/OH-Flight Technical & Support /Cabin Layout/747-400/Cabin Version 7443



Overhead flight crew rest (OFCR)
 - 2 berths
 - 2 seats



Overhead flight attendant rest (OFAR)
 - 7 berths

Facilities for passenger with disability

Accessible lavatories

Lavatory 2A-1R is provided to accommodate disability passengers as follows:

- Space for wheelchair access
- Handrails provision

Movable armrests

Movable armrests are equipped at aisle seats in Economy class rows:

- 32-47 C D F H
- 48 D F
- 51-60 C D F H
- 61 B D F J

This provision is for wheelchair-passengers to be readily transferred to the seats.

Onboard wheelchair

One onboard wheelchair is provided onboard.

Storage for individual foldable wheelchair

Not available

(77E) INTERIOR ARRANGEMENT 777-200ER VERSION 77E1: HS-TJR S T U V W

◀	Baby bassinet position	Lavatories	10	REASONS FOR REVISION: Added description of facilities for disability passengers
C	Coatroom	CA seats	14	
•	Diaper-change board in lavatory	Business class seats	30	
D	Doghouse	Economy class seats	262	
G	Galley	TOTAL PAX SEATS	292	
S	Stowage compartment			Prepared by: BKKOT
VCC	Video control center			
	Wall mounted LCD monitor (15" BC, 9" EC)			
□	Overhead LCD monitor 9" EC			
E	Overhead crew rest escape hatch			
◇	CSCP (1L) CACP (2L & 4R)			
•	Stretcher accommodated break-over seat			
•	Magazine rack, wall mounted			
○	CA station: AP 1L 1R 2L 2R 3L 3R 4L 4R			
⊕	Medical outlets: 28VDC and 115 VAC 60 Hz			
—	Movable armrest equipped at seat			

This document contains information intended only for the purposes related to training, crew procedures and passenger relations. Any discrepancy, contact BKKOT Tel. 02-5452816, Fax. 02-5453851, email: pawinee.w@thaiairways.com

This info is available in Thaisphere/THAI Family/OH-Flight Technical & Support /Cabin Layout /777-200ER/Cabin Version 77E1